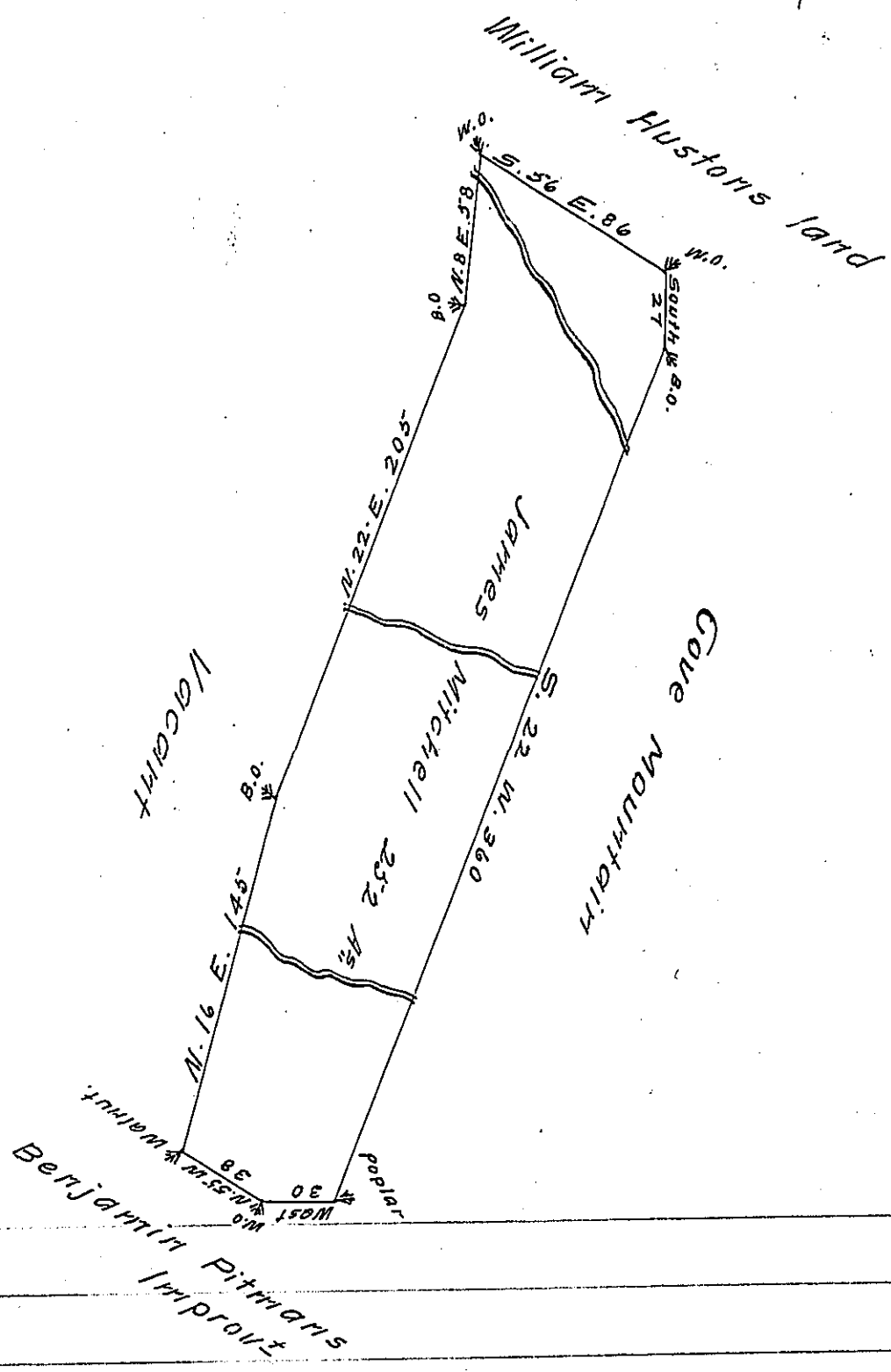


Not Pat.



Situate on Licking Creek in Belfast township Cum-
berland now Bedford County containing two hundred
and fifty two acres with the usual allowance of
six per cent for roads &c. surveyed for James Mitchell
the 27th day of January 1787, in pursuance of a warrant
dated June 9th 1763

George Woods, D.S.

To John Lukens, Esq^t S. B.

IN TESTIMONY that the above is a copy of the original remaining on file in
the Department of Internal Affairs of Pennsylvania, made
conformably to an Act of Assembly approved the 16th day of
February, 1833, I have hereunto set my Hand and caused
the Seal of said Department to be affixed at Harrisburg,
this ninth day of December 1908

Henry Houck
Secretary of Internal Affairs.